

---

<b>Report To:</b>	<b>Education &amp; Lifelong Learning Committee</b>	<b>Date:</b> 19 January 2010
<b>Report By:</b>	<b>Acting Director of Education</b>	<b>Report No:</b> EDUC/07/10/JF
<b>Contact Officer:</b>	<b>John Ferrie QIO Schools Estate</b>	<b>Contact No:</b> 01475 712824
<b>Subject:</b>	<b>Surplus capacity in secondary schools.</b>	

---

## 1.0 PURPOSE

- 1.1 The purpose of this report is to advise the Education and Lifelong Learning Committee of proposals for the use of accommodation which has been identified as being surplus to the educational requirements of Gourock High School and Greenock Academy for session 2010/2011. Further details in Appendix 1 and within layouts in Appendix 2.

## 2.0 SUMMARY

- 2.1 The S1 rolls of Gourock and Greenock have been set at 100 for both schools for session 2010 in line with the capacity of the new Clydeview Academy. As a consequence it has been possible, in consultation with the Heads of both schools, to identify accommodation which is surplus to the educational requirements of the schools.
- 2.2 As a result of changes which have taken place in the school estate a number of services provided by education are seeking alternative accommodation. This paper sets out proposals for the use of the accommodation identified as surplus in Gourock High School and Greenock Academy
- 2.3 The Head Teachers and Education staff have agreed that the reallocation of surplus accommodation in both schools will have no adverse impact on the education of the pupils in both schools.
- 2.4 In line with the ELLC decision at the special meeting 18<sup>th</sup> August 2009 to accept the independent Review of Admissions and Placing Requests Policy of Inverclyde Council the capacities of Gourock High School and Greenock Academy need to be reduced to restrict further over capacity when they amalgamate into in the new Clydeview Academy in summer 2011. Although the S1 intake of the new school is set at 180 it will be over capacity in its first two years due to recent decisions affecting the planned capping.
- 2.5 In order to maintain the S1 capping limits of 100 for both schools it is necessary to reduce the capacity as stated in the independent Review of Admissions and Placing Requests Policy of Inverclyde Council *“Education Services should act to reduce the capacity at Greenock Academy and Gourock High School in advance of admissions to these schools for academic session 2010 – 2011.”*

## 3.0 RECOMMENDATIONS

- 3.1 The Committee is asked to approve the following recommendations:-
- 3.1.1 to remove one surplus classroom from the accommodation in Gourock High School thus reducing the capacity to 610 for session 2010/2011. This will ensure that the capping

---

level of 100 is not breached.

- 3.1.2 to remove six surplus classrooms from the accommodation in Greenock Academy thus reducing the capacity to 686 for session 2010/2011. This will ensure that the capping level of 100 is not breached.
- 3.1.3 that the alternative uses of the surplus accommodation is to be carried out in May/June 2010.
- 3.1.4 to reaffirm the capping of the S1 intake for Gourock High School for session 2010/2011 at 100 pupils.
- 3.1.5 to reaffirm the capping of the S1 intake for Greenock Academy for session 2010/2011 at 100 pupils.
- 3.1.6 to reaffirm the capping of the S1 intake for Clydeview Academy for session 2011/2012 at 180 pupils.

**Albert Henderson**  
**Acting Director of Education**

## 4.0 BACKGROUND

- 4.1 As part of the PPP Schools Project within the School Estate Management Plan (SEMP) Gourock High School and Greenock Academy will amalgamate into a new school built on the site of the old St. Columba's High School at Reservoir Road in Gourock. The new school will be named Clydeview Academy and has a design capacity of 950 pupils.
- 4.2 Due to recent decisions affecting the planned capping, the new school, Clydeview Academy, will be significantly over capacity in its first two years; sessions 2011/2012 and 2013/2014. Thereafter the over capacity will reduce to within manageable levels.
- 4.3 The independent Review of Admissions and Placing Requests Policy of Inverclyde Council concluded that Education Services should act to reduce the capacity at Greenock Academy and Gourock High School in advance of admissions to these schools for academic session 2010 – 2011.
- 4.4 The roll projections for Gourock High School for 2010/2011 are agreed and set at:

S1	S2	S3	S4	S5	S6	Total
100	113	100	119	109	77	618

The roll projections for Greenock Academy for 2010/2011 are set at:

S1	S2	S3	S4	S5	S6	Total
100	105	94	160	131	104	694

- 4.5 Discussions have taken place with Headteachers to agree the use of the surplus accommodation.

## 5.0 PROPOSALS

- 5.1 In order to achieve the required capping figures for Gourock High School and subsequently the new Clydeview Academy it is proposed to reduce the number of classrooms by one.
- 5.2 In order to achieve the required capping figures for Greenock Academy and subsequently the new Clydeview Academy it is proposed to reduce the number of classrooms by six.

## 6.0 IMPLICATIONS

- 6.1 Financial  
All costs are to be contained within the current School Estate budget.
- 6.2 Legal  
The principles and rules of Standard Circular 3.2 on secondary school capacities have been applied in the proposed capacity reductions of these two schools.
- 6.3 Human Resources  
N/A

## 7.0 EQUALITIES

7.1 There are no equality issues.

**Gourock High School**

Capacity to be reduced by the change in use of one classroom: -

- Room 26 which is currently a mathematics classroom is to be changed into a conference room which will be used for a number of school and authority uses especially for Continued Professional Development (CPD).

**Greenock Academy**

Capacity to be reduced by the change in use of six classrooms: -

- Room 162 which is currently an art classroom (on the top floor) is to be changed into a decant store for use of the School Estate Team (SET) in arranging the decant of schools especially Greenock Academy and Gourock High School.
- Room 65 which is currently a humanities classroom is to be reorganised to make an office for the active schools staff.<sup>1</sup>
- Room 66 which is currently a mathematics classroom is to be reorganised to make a store for the active schools staff.<sup>2</sup>
- Room 80 which is currently a mathematics classroom is to be reorganised into an office for the Looked After Children (LAC) team and the Visual Impairment Team both of whom are currently based in St. Stephen's' High School.<sup>3</sup>
- Room 215 which is currently a PE classroom is to be reorganised into an authority in-services suite.<sup>4</sup>
- Room 112 which is currently a humanities which his available as an office for staff currently in Highholm School building. Yet to be identified.

---

<sup>1</sup> This group is currently housed in accommodation in St. Stephen's High School. This accommodation has to be freed up in late May 2010 to allow the refurbishment work for the temporary shared campus. If Greenock Academy cannot be used then other suitable alternative accommodation must be found.

<sup>2</sup> As part of freeing up the accommodation at St. Stephen's' High School by late May 2010.

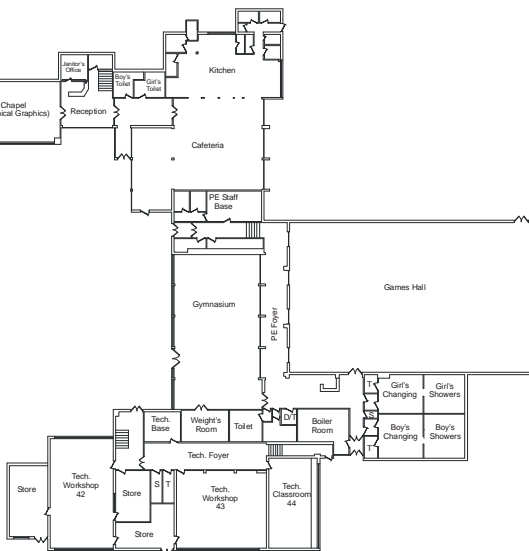
<sup>3</sup> Similar position to the active schools staff in having to vacate St. Stephens' HS towards the end o May 2010.

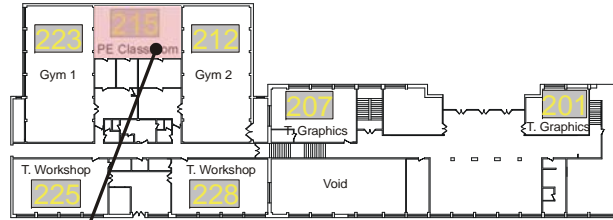
<sup>4</sup> Currently located at St. Stephen's' High School but needs to be relocated due to the planned refurbishment for the shared campus. This new location is attractive as there will be ample playground parking in the evening and direct external access.



Conference room

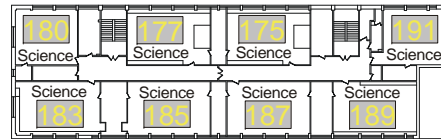
**Gourock High School**  
 Rooms to be taken out of capacity



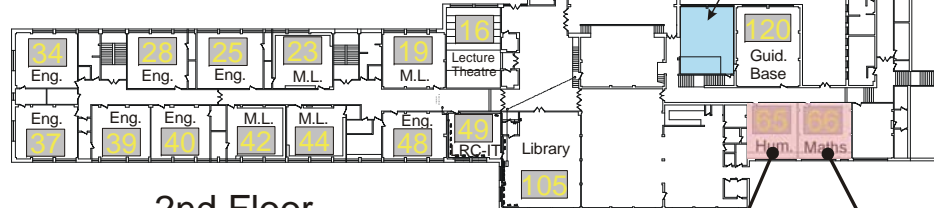


Ground

In-service Suite



1st Floor



2nd Floor

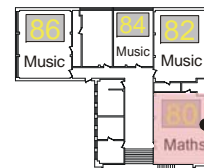
SET decant store



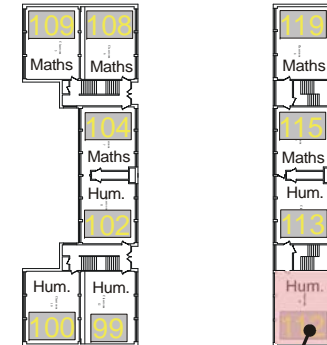
3rd Floor

# Greenock Academy

Rooms to be taken out of capacity



LAC & VI Office



South Wing 2nd/3rd/4th Floor

Active Sports Offices

Active Sports Store

Occupancy for Highholm Staff - tbc